



Family Empowerment Scholarship for
Students with Unique Abilities (FES-UA)

October 17th, 2024

Presented by Step Up For Students

OPEN HOUSE
FES-UA





FES-UA

Agenda

Communications

MyScholarShop: New Vendor Alert

Handbook Highlights

Purchasing Guide Hot Topics

Q&A

Resources

Contact Us





FES-UA



For all 2023-2024 PEP Students



Action Needed

Avoid funding delays by completing your PEP student's SLP by 9/15 and submitting your PEP student's end-of-year norm-referenced test results by ~~10/15~~

Please disregard this message if you completed these actions earlier today.

Dear Parent Guardian,

To avoid funding delays, PEP students must complete a 2024-25 Student Learning Plan (SLP) in EMA by this Sunday, September 15, and submit their 2023-24 end-of-year norm-referenced test or statewide assessment results by October 15.

Please continue reading for more information.

Annual Assessment Results

Students funded on the PEP scholarship in the spring of the 2023-24 school year who are continuing PEP for the 2024-25 school year, must submit the student's 2023-24 end-of-year norm-referenced annual assessment results.

If you do not submit your student's end-of-year norm-referenced annual assessment results by 11:59 p.m. ET on October 15, 2024, no additional funding will be distributed to your student's account. Should your student choose to return to the program in a future year, your student will be considered a new student.

- [Click here](#) for step-by-step instructions on how to submit your renewal student's assessment or test results.
- While submission of test scores is required by law, the **results** of the test will not impact your student's scholarship eligibility or your ability to access your student's scholarship funds or any provider's services.
- **Still need to take an assessment?** It's not too late. A list of approved tests can be found [here](#).
- MyScholarShop now includes two vendors offering a direct-buying option for approved norm-referenced tests: [Homeschool Boss](#) (administering the NWEA Measures of Academic Progress test) and [CLT](#) (administering the Classic Learning Test).

Have you decided that you no longer want the PEP scholarship for your student? [Click here](#) to fill out a form to decline your 2024-25 scholarship.

This communication is a reminder if you have not submitted your student's previous year end-of-year norm referenced annual assessment results, you must submit them by ~~Oct 15, 2024~~ **October 25, 2024**.

If you do not submit the assessment results, no additional funding will be distributed to your student's account. So please take care of this if you have not done so already.

Please note: For previous PEP students who are exempt from Annual Assessment requirements, please complete and submit the Test Exempt Form.

Extended to 10/25/24!!



FES-UA

MyScholarShop New Vendor Alert



Company Name	Description of Services	Website
	<p>Homeschool Complete provides parents with a high-quality homeschool curriculum to help meet the educational goals of each family. The methods and ideas have been developed by a certified teacher and tested with homeschool students. Our curriculum aligns with accepted grade level standards and exemplifies excellence in homeschool education.</p>	<p>www.homeschoolcomplete.com</p>
	<p>Are you looking for a world history curriculum for your high school student that is complete and easy to use? Exploring World History covers all periods of history—ancient, medieval, and modern—from the perspective of faith in God and respect for His Word. It offers a thorough survey of Western civilization with significant coverage of Latin America, Africa, and Asia.</p>	<p>https://shop.notgrass.com/</p>
	<p>MOJO Education is committed to providing high-quality early childhood resources that promote diversity and inclusion. Our mission is to enhance self-esteem in children through learning materials that reflect their identities and peers. We recognize the importance of play in shaping children's perspectives on diversity and culture. Our resources align with national and state standards, aiming to foster a kinder, more inclusive world.</p>	<p>www.mojoeducation.com</p>



FES-UA

MyScholarShop Resources



Welcome to

my
ScholarSHOP

NAVIGATING MyScholarShop In EMA

Navigating MyScholarShop
in EMA



**PARENTS: FINDING PROVIDERS &
SERVICES IN THE MARKETPLACE**

Parents: Finding Services and
Providers in the Marketplace



FES-UA



Handbook Highlights

High Risk 3,4,& 5 year-old Category:

What is it? For the purposes of FES UA scholarship eligibility, a high-risk child is from 3 to 5 years of age who has one or more of the following characteristics:

- A developmental delay in cognition, language, or physical development.
- A child surviving a catastrophic infectious or traumatic illness known to be associated with developmental delay.
- A child with a parent or guardian with developmental disabilities who requires assistance in meeting the child's developmental needs.
- A child who has a physical or genetic anomaly associated with a developmental disability.

Who does it apply to? 3 or 4 years old, or eligible to enroll in kindergarten through 12th grade in a public school in Florida, and the subject of an Individualized Education Plan (IEP) or who has a diagnosis of a disability from a licensed physician or psychologist.

What are the cut-off birthdates?

- At age 6 a student qualifying as a high-risk child must establish eligibility under another category to continue in the program.

[DOE FES-UA FAQs Link](#)

Handbook Page Number(s): 41-43



FES-UA



Scholarship Funding Schedule

Scholarship funds are deposited into the student's scholarship account four times a year.

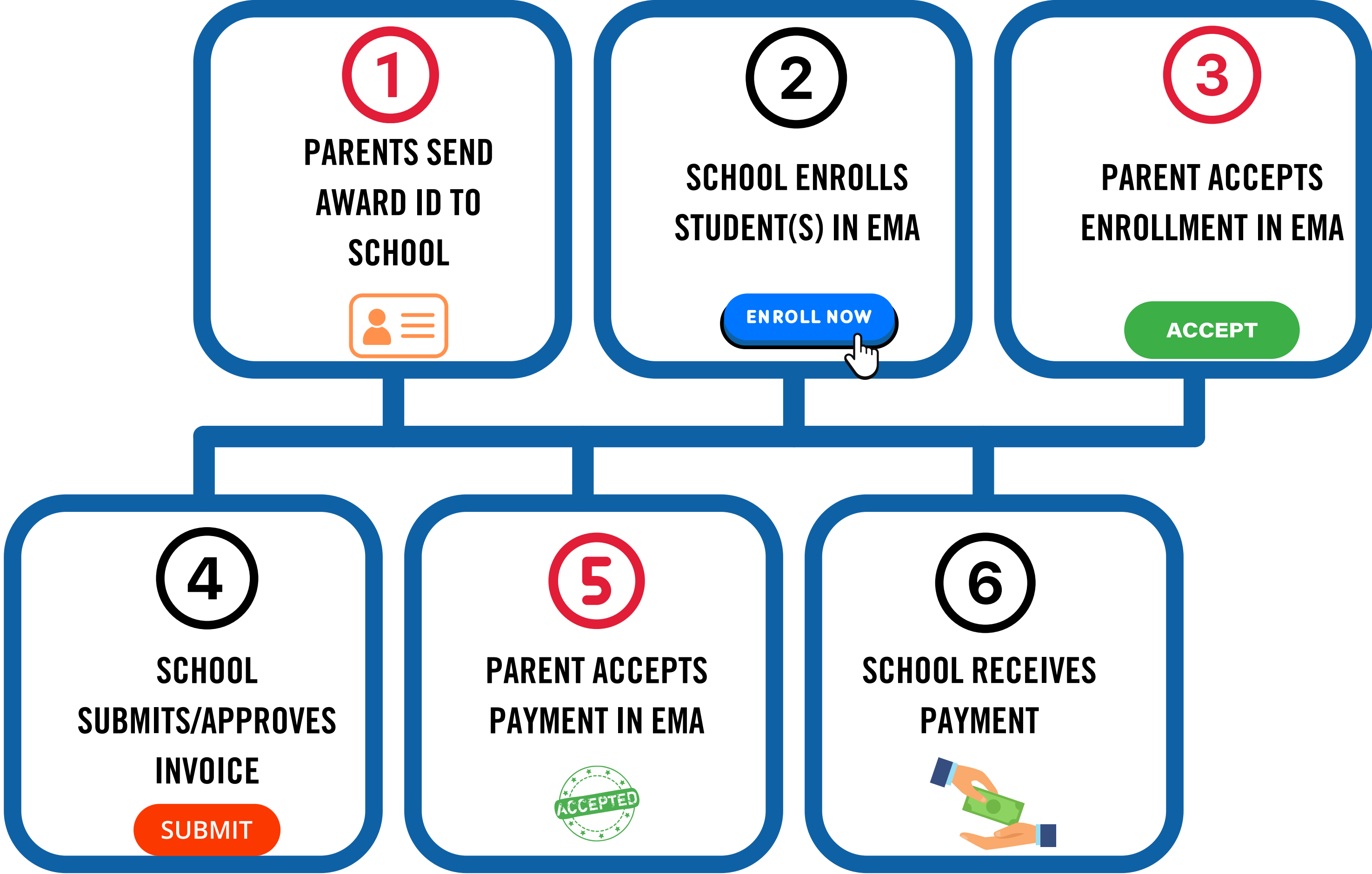
A Scholarship Funding Organization must verify a student's eligibility to participate in the program at least 30 days before receiving funding from the state.

Once the Florida Department of Education receives a verified list of eligible students from Step Up, the department will send scholarship funds quarterly on the following dates:

Enrollment or SLP deadline	Funds delivered to Step Up
June 30*	August 1*
July 26*	September 1*
September 15	November 1
December 15	February 1
February 15	April 1

* There are two funding dates for the first quarter.

WHAT ARE THE STEPS TO SCHOOL ENROLLMENT WITH STEP UP?





FES-UA

Handbook Highlights

A student awarded an FES-UA scholarship may not enroll full-time in any public school, including:

- A charter school
- A developmental research school
- Any other Florida public school
- Florida Virtual School or any other online public school (**Scholarship students can attend FLVS as a private pay student**)
- The College-Preparatory Boarding Academy
- The Florida Scholars Academy
- The Florida School for Competitive Academics
- The Florida School for the Deaf and the Blind

Parents and guardians may use their student's scholarship to pay for classes or services provided by public schools, but public schools may not report the student to the state for funding.



FES-UA

Pre-Authorizations:

- When are they needed?
- Why are they needed?
- How do parents go about completing them?

All of this information can be found in the [Pre Authorizations for Families 2024-25](#) You Tube Video Linked here.



[Pre Authorizations for Families 2024-25](#)



FES-UA

How To Find Providers:

How may I use the marketplace to find a direct pay extracurricular activity for my child to participate in?

All of this information can be found in the [Parents: Finding Providers and Services in Marketplace](#)

You Tube Video Linked here

A screenshot of a web application interface. At the top, a dark blue header contains the text "Parents: Finding Providers and Services in Marketplace" and "FINDING PROVIDERS & CHOOSING SERVICES IN THE MARKETPLACE" with a "Share" button. Below the header is a sidebar with navigation links: Dashboard, Reimbursements, My Students, Marketplace, and Help. The main content area shows a "Scholarship Portal" window with a "Provider Details" section for "LET IT SNOW EARLY CHILDHOOD SCHOOL". A dropdown menu is open, showing "Select A Location To View Services" and "Select a location". A red box highlights the dropdown, and a blue arrow points to it. A red play button icon is overlaid on the dropdown. Below the screenshot, text reads: "When you have found your provider, select a location in the dropdown to begin adding a service to the chosen student's account." At the bottom left, there is a "Watch on YouTube" button.

[Parents: Finding Providers and Services in Marketplace](#)



FES-UA

How do you decline a scholarship if you were awarded a different one before being awarded FES-UA?

(If your student was enrolled in a school with the FTC or FES-EO scholarship, the school must unenroll them.)

Click the link below to access the [2024-2025 Decline Your Scholarship Form](#)



No longer interested in the scholarship your student was awarded for the 2024-25 school year?

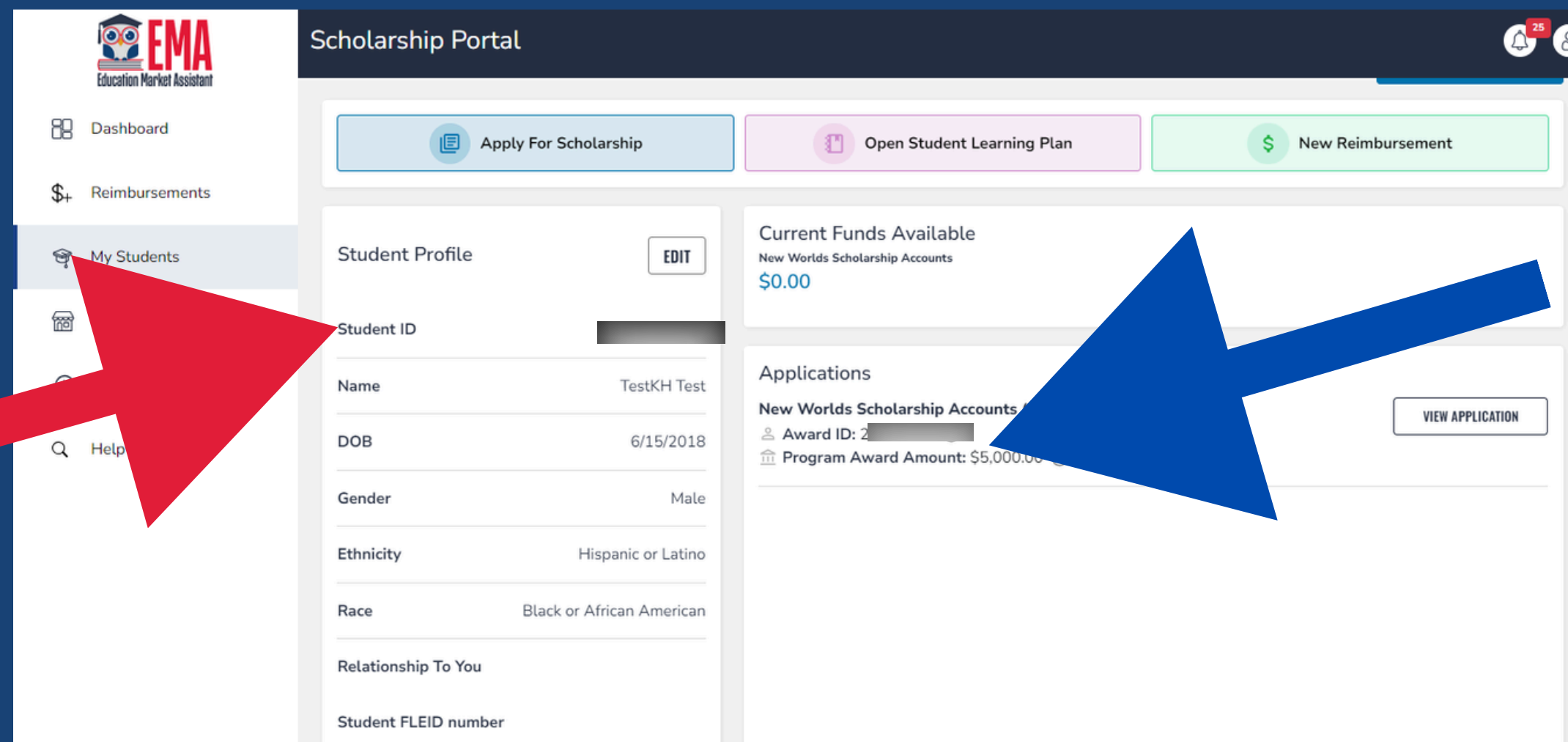
If you are no longer interested in the scholarship your student was awarded for the 2024-25 school year, please complete the following form for the student that you would like to decline the scholarship for. Please allow up to two weeks for your submission to be processed.

Note: If you have more than one student for whom you would like to decline their scholarship, please complete a form for each student.

IMPORTANT: By submitting this form, your requested change to your student's awarded scholarship status will be taken. If you choose to decline a scholarship program and are interested in a different scholarship for your student for the 2024-25 school year, you will need to apply for that scholarship. If you request to switch between scholarships on the same application (FTCPEP and the private school option), no further action is required after submission.



Award ID vs Student ID



Student ID:
Use this number to complete the Scholarship Decline Form, or when speaking with the Engagement Center.

Award ID:
Give this number to an eligible private school of your choice for enrollment. This number changes yearly.



Decline Form: Common Error

Which scholarship are you declining for your student?

Please make certain you are declining the CURRENT SCHOLARSHIP, NOT the scholarship you wish to apply for.

Example: If your student was awarded the FES-EO scholarship and you wish to apply for the PEP scholarship, please select FES-EO in the dropdown menu.

This can be found within your EMA account by clicking on the "My Students" link, then on "View Student" for the appropriate student. The Student ID will be listed at the top of the next page.

[Click here to learn the difference between the Student ID and Award ID.](#)

Student First Name *

Please provide the student's **first** name as it is shown in EMA

Student Last Name *

Please provide the student's **last** name as it is shown in EMA

Which scholarship are you declining for your student? *

Please tell us why you are not interested *

To better understand your current circumstances, we kindly request you select a reason why you are opting to decline the selected scholarship option.

Your feedback will help us improve our scholarship experience in the future. Thank you for your time and input.

I certify that the provided information is accurate and true. I confirm that Step Up For Students has permission to decline the specified scholarship program for my student for the 2024-2025 school year and that this action is final. *

I understand that my request will be processed and action taken in accordance with my selection. I understand that if I chose to decline a scholarship and wish to return to the scholarship program in a future year, that I will have to reapply and requalify as a new applicant.

Enter Guardian Name (First and Last name) to sign



FES-UA



Purchasing Guide

Hot Topics



Sports Education





FES-UA

Examples Of Approved Sports Education

Activities



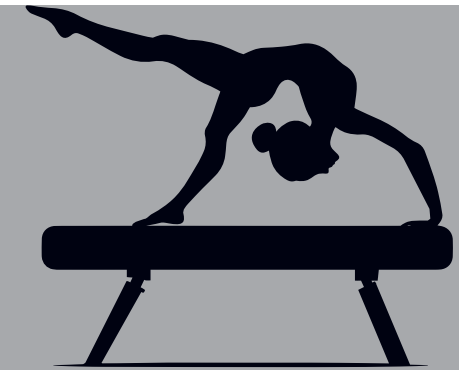
Lacrosse



Football



Cheerleading



Gymnastics



Baseball



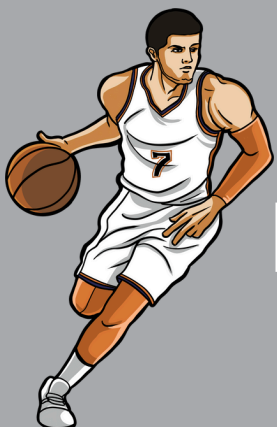
Tennis



Golf



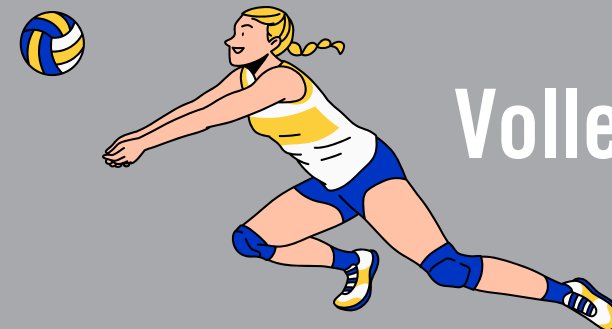
Dance



Basketball



Soccer



Volleyball



Swimming



FES-UA



Approved Sports Education

- Authorized P.E. expenses include sports lessons, fees, or equipment (subject to manufacturer's age recommendations).
- Sports lessons (including individual training or group trainings).
- Team fees (including registration, equipment rental, and competition fees).
- Stand-alone athletic Event Fees (including foot or bike race registrations, endurance events, and Special Olympics Registrations).
- Gym/fitness memberships or "Class Passes" (for the student only), including on-demand fitness classes.
- Specialized or Sport Specific Footwear





FES-UA



At this time we do not have the staffing for live Q&A sessions during the webinars but all questions turned in after the webinar are reviewed and we do our best to answer them in the following month's webinar.





FES-UA

Question: Can we go over the policy timeframes for electronics purchases and what the policy is regarding broken devices beyond repair.

Answer: Eligible instructional materials include: Digital Devices • Desktop computer • Laptop computer • Web-centric laptop computers (such as Chromebook or Surface) • Tablet • e-Reader • Cellular phones • Smart watches • Gaming systems/Consoles purchased with accompanying educational software.

FREQUENCY OF PURCHASE: ONCE EVERY TWO (2) YEARS; HOWEVER, THE DEVICES MAY BE ELIGIBLE FOR REPLACEMENT SOONER WITH PRE-AUTHORIZATION.

If an item purchased with scholarship funds is broken beyond repair, it may be replaced with a similar item of equal or lesser value. A parent or guardian must submit a pre-authorization request and documentation from a repair shop or service technician showing the item is beyond repair. Photos of the damaged item do not qualify as sufficient documentation. If the item can be repaired, scholarship funds may be used to cover the cost of repair, but they cannot be used to cover the cost of a replacement.



FES-UA

Question: -Now that we have the FES-UA scholarship, do we have to reapply each year and provide supporting documentation for the diagnosis?

Answer: Parents and guardians usually only need to document a child's diagnosis the first year they apply for a scholarship, except for students who qualify as High-Risk, Dual Sensory Impaired, or Hospital or Homebound. Parents and guardians of students who initially qualify under the High-Risk designation must provide documentation of eligibility for the student, under one of the other diagnoses outlined above, if the student will turn 6 years old on or before September 1 of the school year they apply. A current IEP is required to demonstrate a dual sensory impaired or a Hospital or Homebound diagnosis, and Hospital or Homebound IEPs must be updated each year.

Families will renew each year to confirm their desire to remain on the scholarship and confirm their Proof of Residency as a Florida resident.

Question: Best practices when having to call or chat with customer engagement. What is a ticket?

Answer: When you call the Engagement Center or chat via the website, be prepared with your account information: name, email address, and security questions. Tickets are used to track and resolve specific concerns that require action; not all calls or chats result in a ticket being needed.



FES-UA



Question: Can families be reimbursed for tuition not in the eligible private school category/marketplace?

Answer: Tuition can only be reimbursed for approved expenses at an approved provider, eligible private school, eligible post-secondary institution, approved pre-apprenticeship program, DOE-approved private online provider, or Florida Virtual School.

Question: What are the options for using FES-UA funds after a student graduates from high school. (Continuing student definition).

Answer: Funds can be used for transition to work after high school graduation for students not older than 22 years of age. (Purchasing Guide pgs. 23-25). Funds can also be used for a Florida 529 College Savings plan (pg 21-22) or a Stanley G Tate Florida Prepaid College Fund (pg 20-21). Please be reminded that if the account remains open for two consecutive years without any spending, the scholarship funds will be returned to the state. The September Open House went into detail on the issue of college funding.



FES-UA



Question: Can a child receiving FES-UA, enrolled in private school, also be eligible for reimbursement for outside tutoring such as Mathnasium?

Answer: YES!!!! If they have the funds available and they are not all being appropriated to their tuition.



FES-UA



New Provider Survey

HELP NEEDED

We are actively looking for committed tutors, as well as afterschool and summer programs, to help families achieve their academic aspirations. If you are aware of any qualified tutors or programs in the counties mentioned below, we would be immensely grateful for your assistance. Please take a moment to fill out the brief survey linked [here](#). Your input can have a meaningful impact on a child's educational experience. Thank you for your support.

New Provider Survey



- Citrus
- Gilcrest
- Glades
- Gulf
- Hardee
- Hamilton
- Hendry
- Jefferson
- Lafayette
- Levy
- Liberty
- Madison
- Monroe
- Taylor
- Union
- Wakulla



FES-UA



2024-2025 Purchasing Guide

FAMILY EMPOWERMENT SCHOLARSHIP FOR STUDENTS WITH UNIQUE ABILITIES (FES-UA)

Purchasing Guide

2024-2025



FES-UA



2024-2025

Parent/Guardian Handbook



**FAMILY EMPOWERMENT SCHOLARSHIP FOR
STUDENTS WITH UNIQUE ABILITIES
PARENT/GUARDIAN HANDBOOK**



FES-UA



FDLRS
Florida Diagnostic &
Learning Resources
System

ABOUT

FIND A CENTER

CHILD FIND

PARENT & FAMILY SERVICES

HRD

TECHNOLOGY

UPCOMING COURSES



CHILD FIND

Are you interested in having your child screened?

For more information about FDLRS: <https://www.fdlrs.org/>



FES-UA

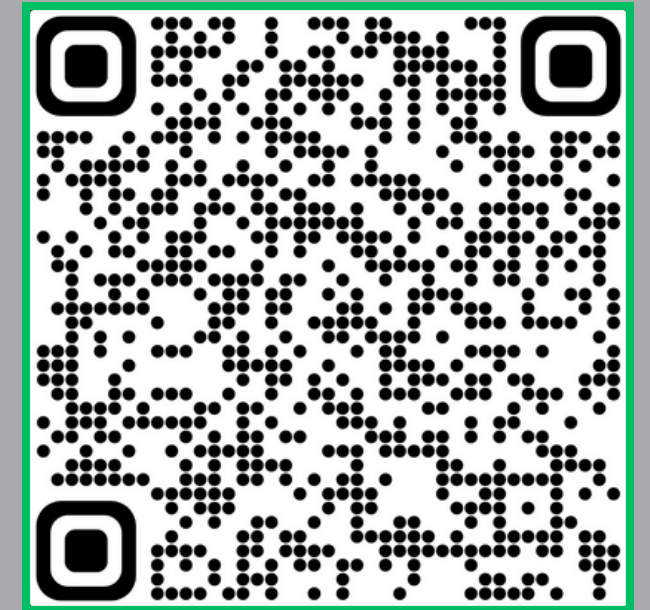
Previous FES-UA Open Houses



[June Open House](#)



[August Open House](#)



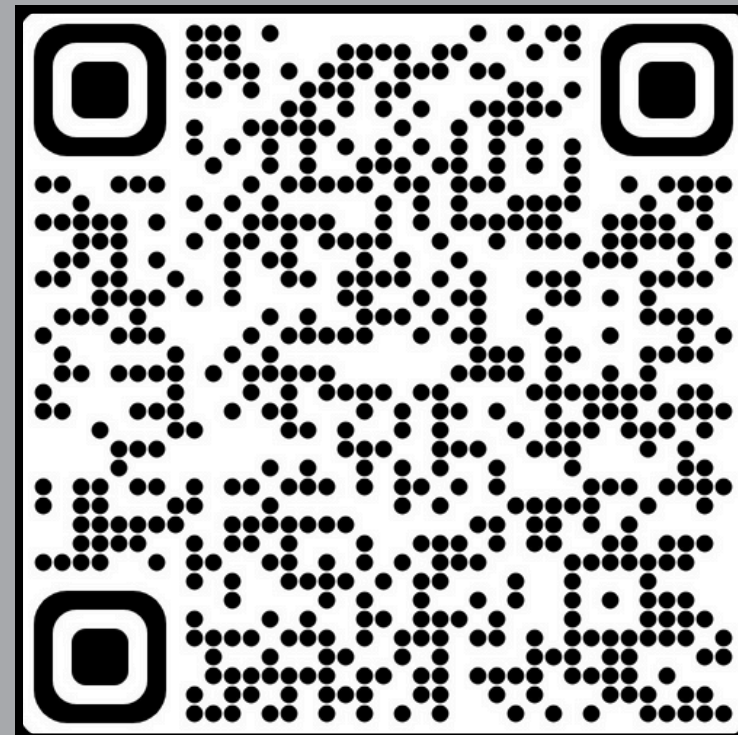
[September Open House](#)



FES-UA

**LOOKING FOR ADDITIONAL
OPEN HOUSES FOR FTC/EO
OR PEP? NOT TO WORRY, WE
HAVE THE LINKS HERE FOR
YOU JUST SCAN THE QR
CODE.**

**FTC/FES-EO Open House
October 10th, 2024**



**FES-UA Open House
November 21st, 2024**

**PEP Open House
October 24th, 2024**





FES-UA

Are you looking for additional help? Scan the QR code or click the link to access our YouTube channel.



[STEP UP FOR STUDENTS YOUTUBE CHANNEL](#)



HOME VIDEOS SHORTS **PLAYLISTS** COMMUNITY CHANNELS ABOUT

Created playlists Sort by

Created by	Number of Videos
Hope WV Provider	2 videos
Hope WV Parent	1 video
Step Up Schools	4 videos
Step Up Parents	7 videos
Step Up Parent	3 videos



FES-UA



Contact Us

Monday-Friday 8:00am-5:00pm EST



Chat with us sufs.org



877-735-7837



FES-UA

Thank you for attending!

Upcoming webinar: November 21, 2024

[Registration Link](#)